

Whole System Model

Appendix A



Local Care Networks are the foundation of the whole system model providing person centred services to populations

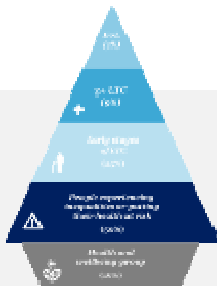


Strong confident communities

Self care

Proactive, Accessible, Coordinated, Continuous Care

- Health coaching
- Self management tool kits
- Social prescribing
- Optimising neighbourhood assets

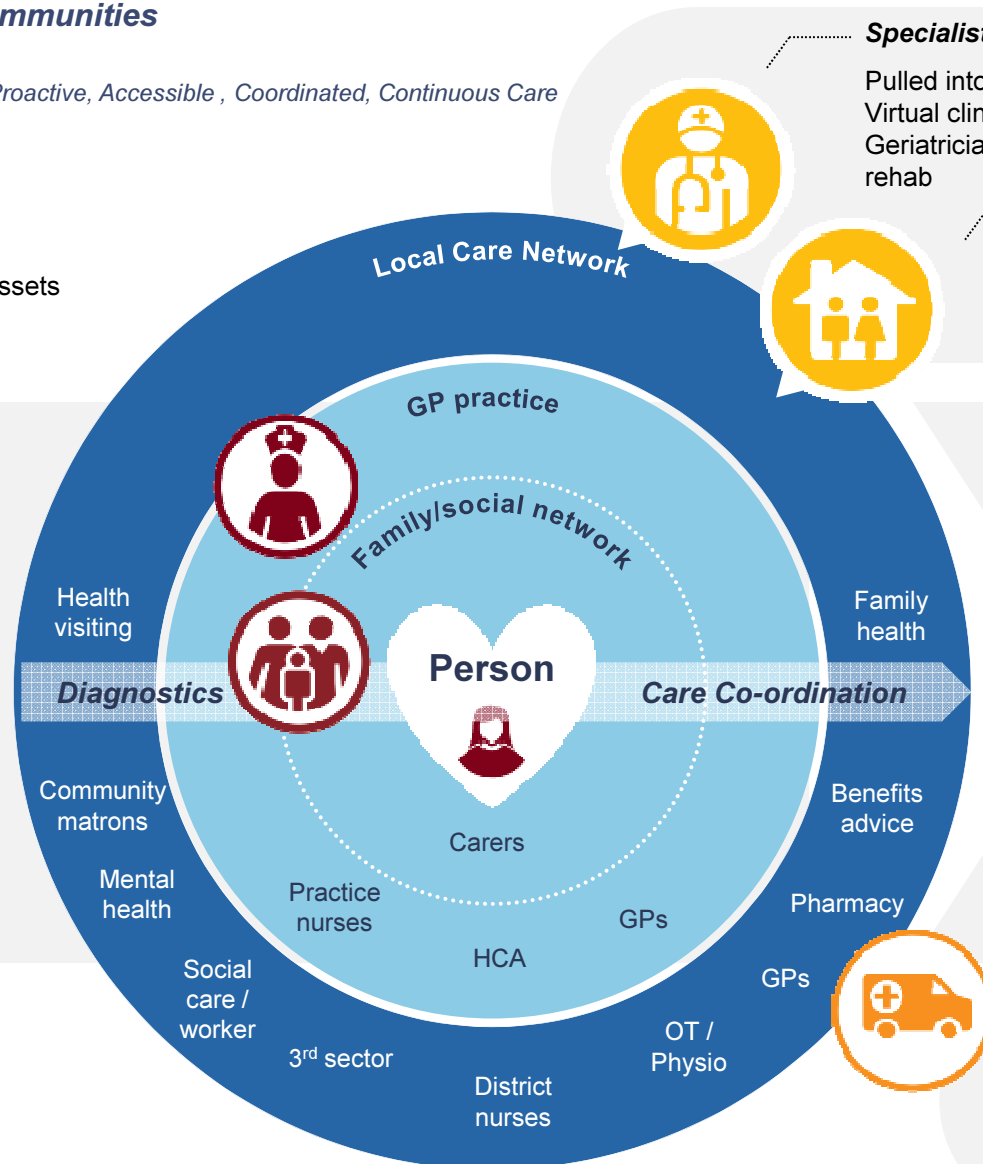


Population needs and budget



Managed care

- Anticipatory care planning
- Active case management
- Disease management
- Public health programmes



Specialist input shared between LCNs:

Pulled into care delivery from outside the network:
Virtual clinics | Specialist nurses | Consultants | Geriatricians | End of Life expertise | Specialist rehab

Wider community infrastructure:

Police | fire service | schools | Housing

Affordable high quality outcomes



Urgent and emergency

Local Care Networks will operate beyond usual GP hours in order to reduce referrals to emergency care

This is Our Healthier South East London health and care whole system model

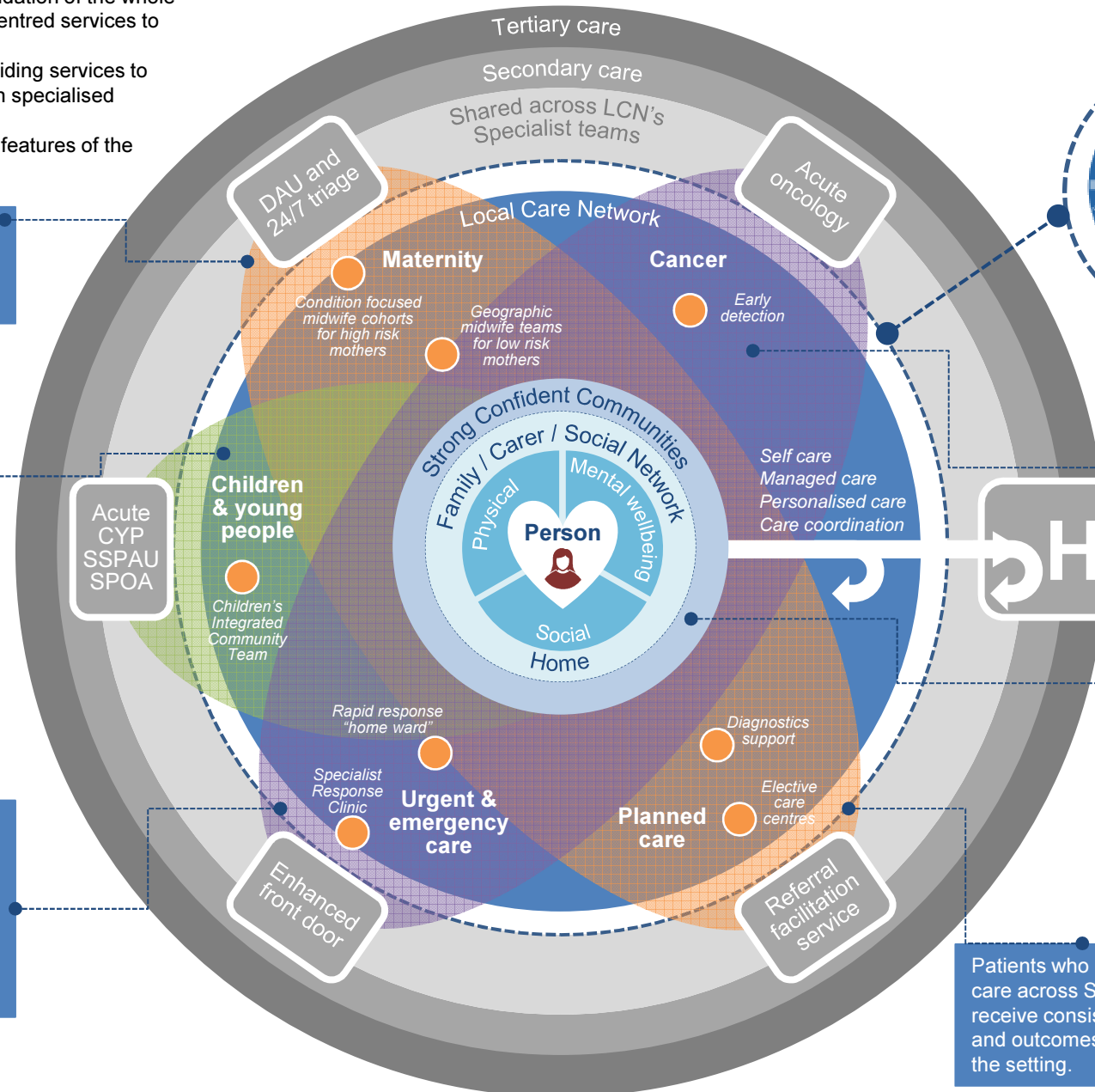


- This is our integrated system model.
- Local Care Networks are the foundation of the whole system model providing person centred services to populations
- The petals are the pathways providing services to cohorts of people and drawing on specialised services
- The orange circles represent key features of the model

Mums-to-be will receive a personalised service, continuity of care and a range of birthing options

Children and young people will be able to access more specialised services through children's integrated community teams

A rapid response team will make sure patients who need urgent and emergency care will receive the treatment they need in the right place at the right time and will support patients to return home and move back to local health and care services



Improve patient outcomes through prevention and early detection and diagnosis of cancer; stronger support for people living with and beyond cancer

Strong confident communities are a critical part of the foundation of the model. Initiatives will seek to build community resilience so that they support local people to be physically and mentally healthy and take care of peoples social needs.

Patients who need planned care across SEL will receive consistent quality and outcomes regardless of the setting.